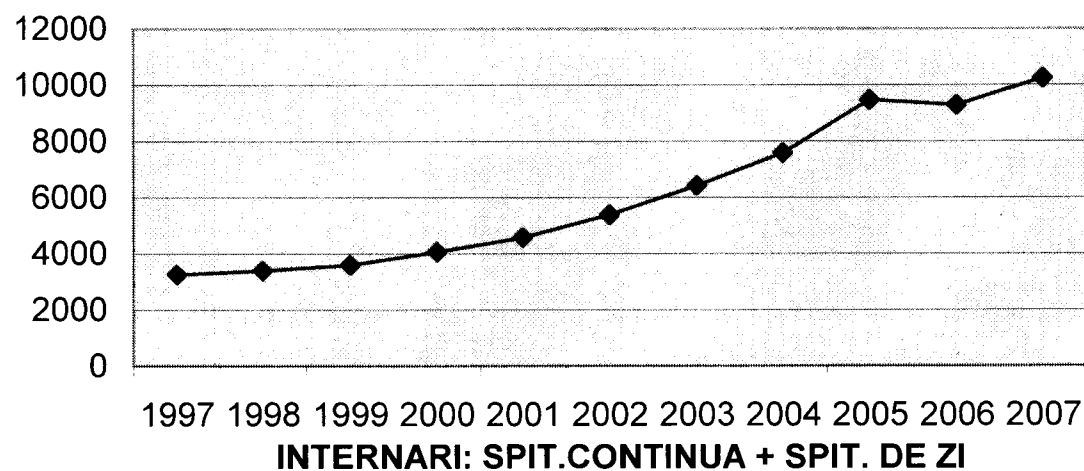


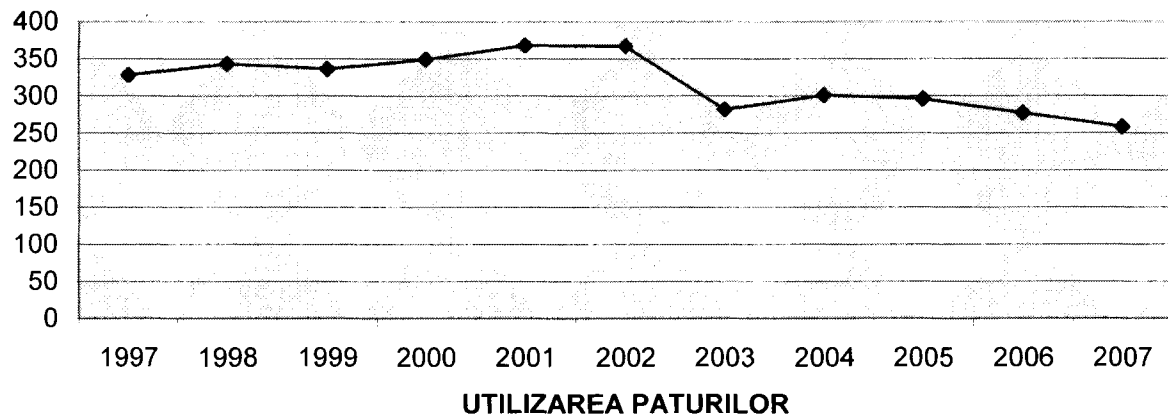
1997	3251
1998	3387
1999	3589
2000	4060
2001	4573
2002	5380
2003	6410
2004	7576
2005	9458
2006	9282
2007	10241

**SPITALUL CLINIC DE PNEUMOFTIZIOLOGIE I
IASI**



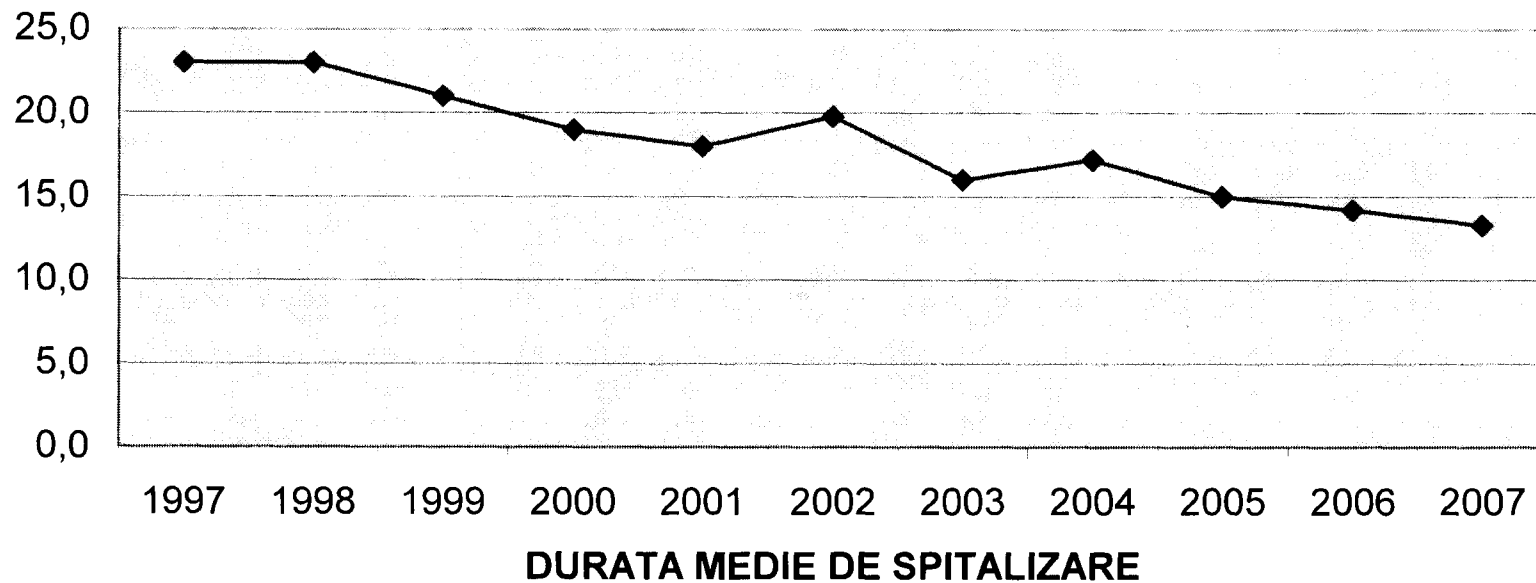
1997	328
1998	343
1999	336
2000	349
2001	368
2002	367
2003	282
2004	301
2005	296
2006	277
2007	258,4

SPITALUL CLINIC DE PNEUMOFTIZIOLOGIE IASI



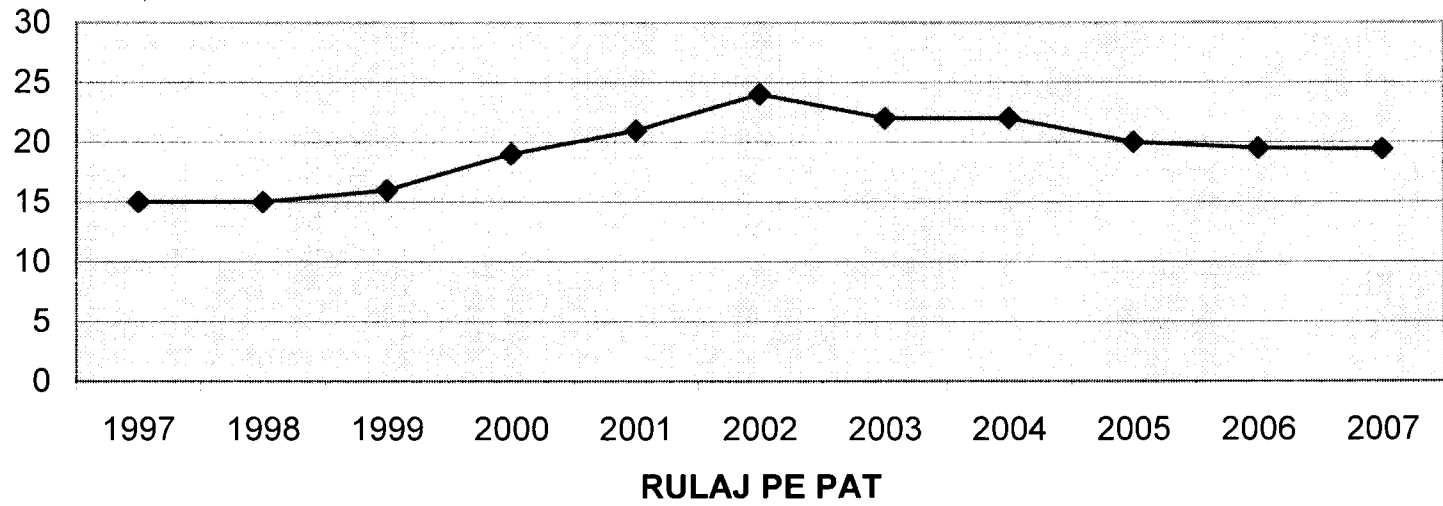
1997	23,0
1998	23,0
1999	21,0
2000	19,0
2001	18,0
2002	19,8
2003	16,0
2004	17,2
2005	15,0
2006	14,2
2007	13,3

SPITALUL CLINIC DE PNEUMOFTIZIOLOGIE IASI



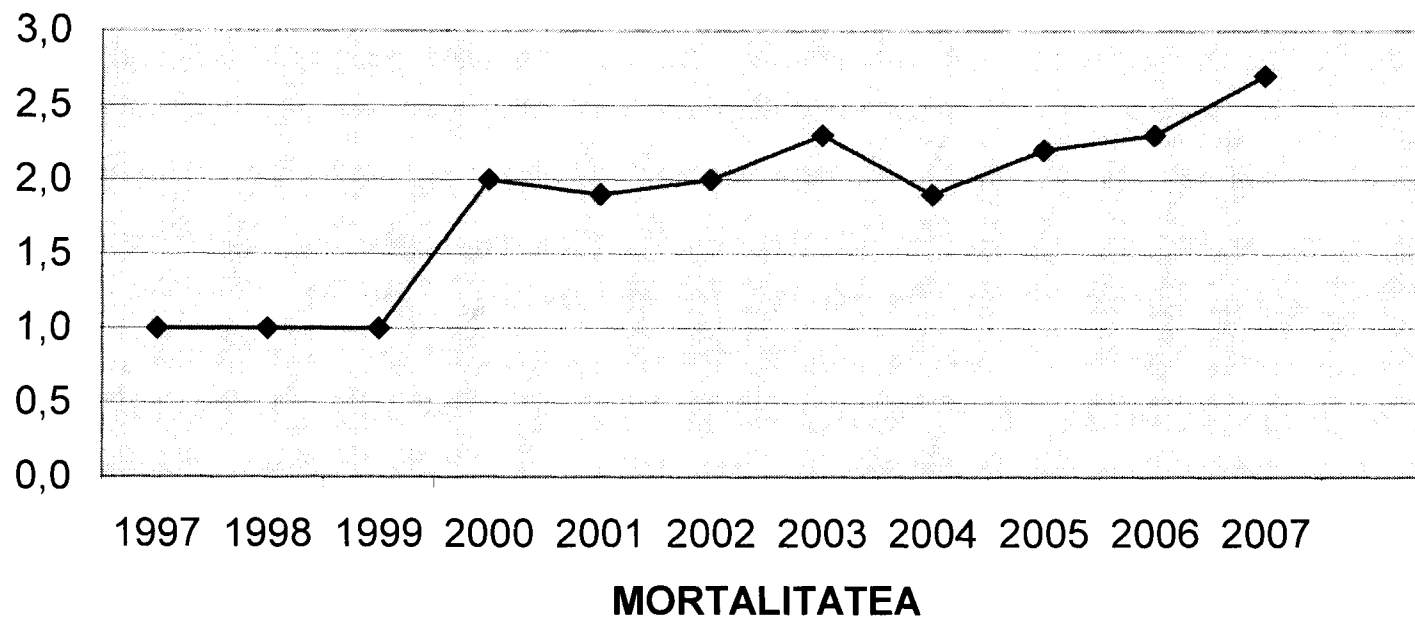
1997	15
1998	15
1999	16
2000	19
2001	21
2002	24
2003	22
2004	22
2005	20
2006	19,5
2007	19,4

SPITALUL CLINIC DE PNEUMOFTIZIOLOGIE IASI

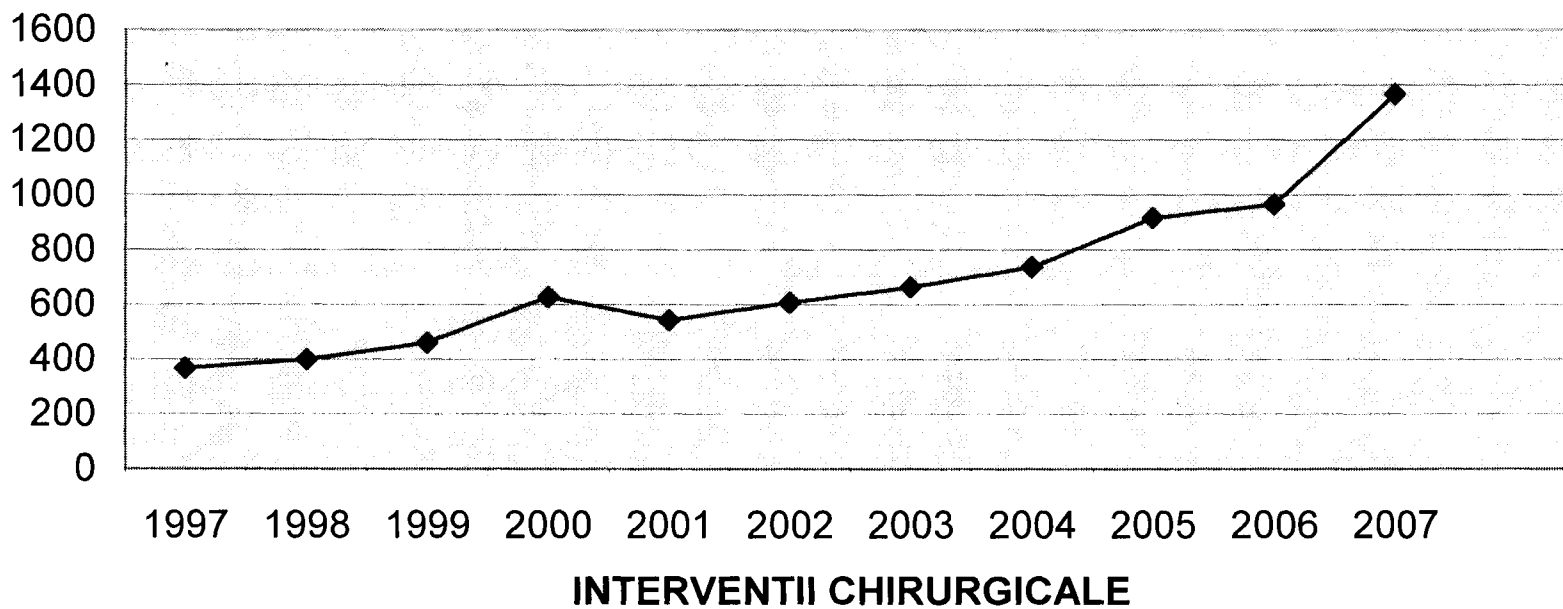


1997	1,0
1998	1,0
1999	1,0
2000	2,0
2001	1,9
2002	2,0
2003	2,3
2004	1,9
2005	2,2
2006	2,3
2007	2,7

SPITALUL CLINIC DE PNEUMOFTIZIOLOGIE IASI



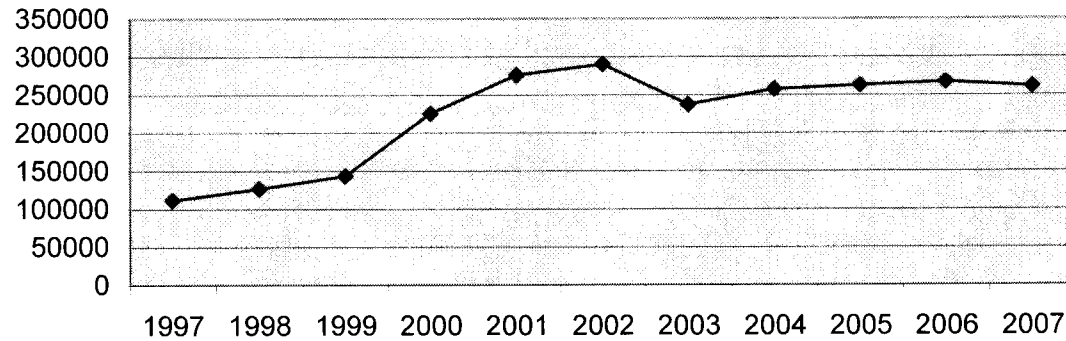
SPITALUL CLINIC DE PNEUMOFTIZIOLOGIE IASI



1997	367
1998	398
1999	460
2000	627
2001	543
2002	607
2003	663
2004	737
2005	916
2006	965
2007	1366

1997 111968
1998 126747
1999 143656
2000 225550
2001 275913
2002 290203
2003 237572
2004 257690
2005 262518
2006 267138
2007 261209

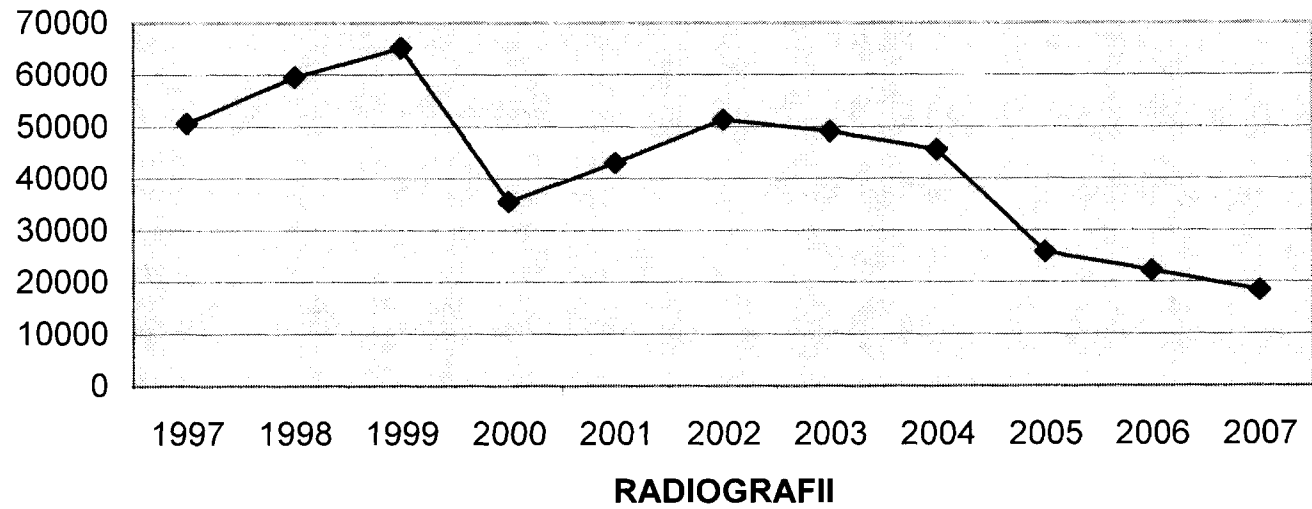
SPITALUL CLINIC DE PNEUMFTIZIOLOGIE IASI



ANALIZA DE LABORATOR

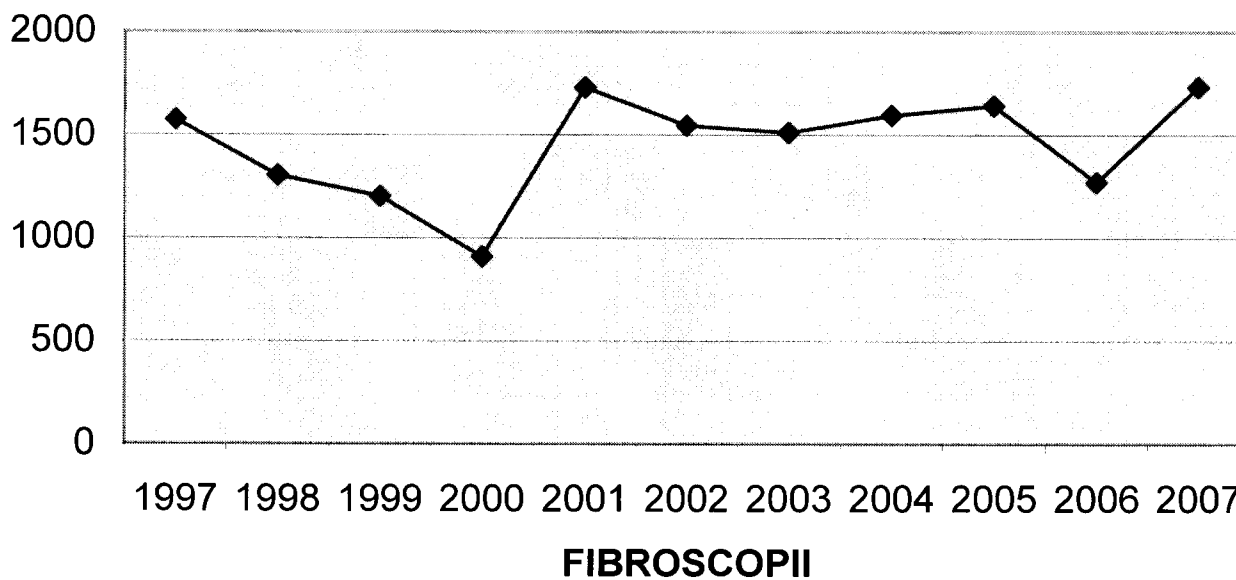
1997	50640
1998	59543
1999	65124
2000	35522
2001	43017
2002	51318
2003	49098
2004	45525
2005	25839
2006	22260
2007	18438

SPITALUL CLINIC DE PNEUMOFTIZIOLOGIE IASI



	TOTAL	FIBRO	BRONHO
1997	1574		
1998	1302		
1999	1202		
2000	908	532	376
2001	1730	954	776
2002	1546	1133	413
2003	1511	1227	284
2004	1596	1469	127
2005	1642	1632	10
2006	1271	1271	
2007	1733	1733	

SPITALUL CLINIC DE PNEUMOFTIZIOLOGIE IASI



1997	3063
1998	3989
1999	4021
2000	16525
2001	14695
2002	18319
2003	14360
2004	14385
2005	15497
2006	15701
2007	31702

SPITALUL CLINIC DE PNEUMOFTIZIOLOGIE IASI

